

# TOURATECH

TOURING RALLYE RACING TECHNOLOGY

March 2002

## 01-020-0010-0

## Roadbook RB-TT

### Parts included:

- 1 x Roadbook Rb-TT
- 1m line-tube black
- 1m line-tube red
- 1 x c-clamp
- 2 x cable connector
- 2 x tube end sleeve
- 1 x remote plug
- 1 x support for FB
- 1 x retaining clip 22mm
- 2 x screw hex M4x12
- 2 x nut self-locking M4
- 2 x washer M4

That RB-TT is prepared and pre-assembled for mounting on Enduro handlebar with average tubing diameter of 12mm.

The small knurled thumb screws (on the sides of the roadbook) serve to change over the RB-TT from manual to electric drive. The toothed driving wheels of the motors are released by pulling both (on each side of the RB-TT) small knurled thumb screws outward. You can now operate the RB-TT manually with the larger knurled thumb screws. This is particularly important when studying the roadbooks and very useful when taking out the paper. Pull the small knurled thumb screws very carefully!!

For the electrical connection you need only two lines, which must be screwed onto the provided c-clamp. This c-clamp then mounted to the bottom surface of the Rb-TT.

Follow the instructions precisely when connecting the RB-TT and follow the diagrams!! Use the enclosed tube end sleeves. The power must be DC voltage at 12 V (+ - 25%).

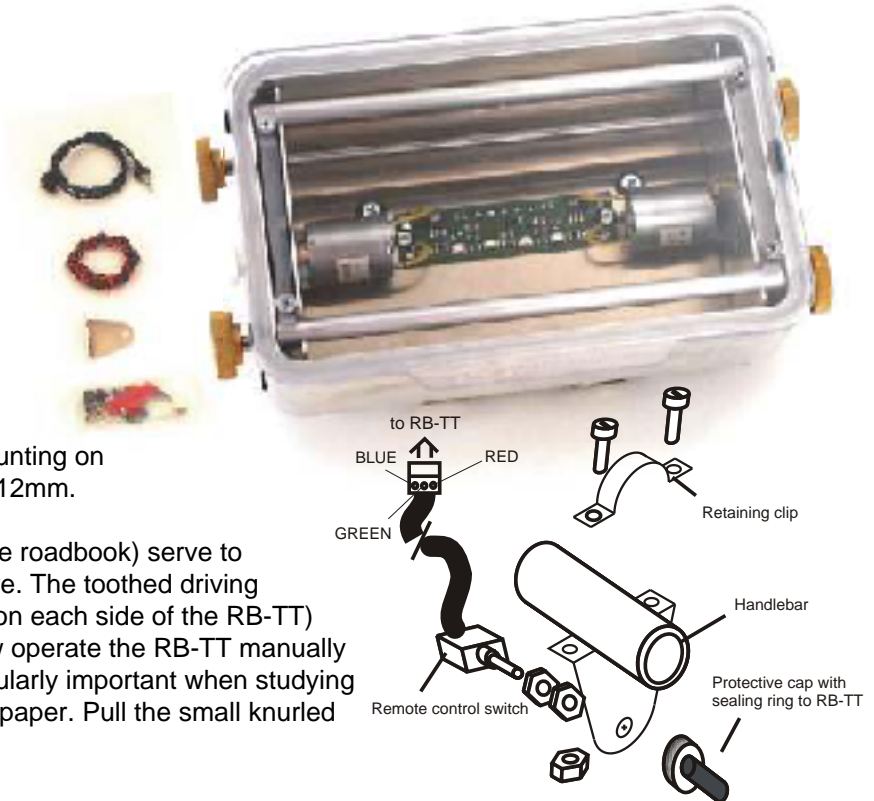
The remote control is installed following the diagram at right. Mount at the handlebar and plug in at the lower surface RB-TT.

**ATTENTION: POLARITY leads to the DESTRUCTION of electronics!**

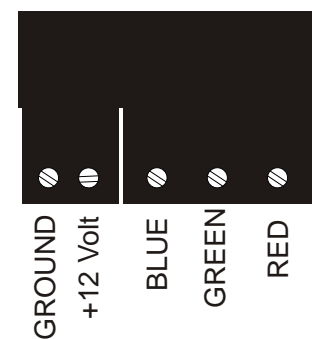
### Operation:

- ! Pull the protective plastic film off the cover!
- ! You remove the cover by simply taking it off!
- ! First attach the end of your paper roll at the lower rear roller firmly (with scotch tape or similar).
- ! Wind the complete paper roll up and stick the beginning on the lower front roller firmly.
- ! Set the cover above, with the lug on the upper paper guide and the RB-TT will now scroll.

The cover closes tightly, so with the RB-TT not attached to the motorcycle it opens very heavily.  
**ATTENTION danger of injury!**



### ELECTRICAL CONNECTIONS



Remote